



Team Work

JIM DAINARD & MIKE HISSINK

VITGOLDCORP.COM

THE VARIETY AND EVOLVING NATURE OF THE MINING INDUSTRY ATTRACTS INDIVIDUALS WHO RELISH THE NEW OPPORTUNITIES that continuously emerge during the life cycle of a major project like Victoria Gold's Eagle Gold Mine.

Including Jim Dainard, Victoria's Controller, who joined Victoria in September 2009 and has seen the project advance through exploration to permitting and licensing to development and construction and becoming a gold producer.

"Although I spend a good amount of time behind a desk in my role, the Victoria team is now getting to play in the dirt with big yellow trucks, which is a childhood dream," says Dainard. "Being part of this company as we pull together and share in Eagle Gold Mine's success is such a great feeling. It will be a satisfying feat for the entire team when we achieve our first gold pour later this year."



Victoria Gold Controller Jim Dainard.

Jim is a CPA and a CA (Chartered Professional Accountant) with a BA from the Goodman School of Business at Brock University. In his position as Controller, he began his career in auditing and then transitioned to financial services and IT before entering the mining industry. When not working, Jim enjoys spending time with family and friends, scuba diving and travelling the world.

"Building the Eagle Gold Mine has been a long time in the works and I value the new, exciting and

challenging experiences each step in the process has brought as Victoria advances to operations," continues Dainard.

Newer to the team, having joined Victoria Gold in September 2018 is Mike Hissink; the company's Senior Maintenance Planner.

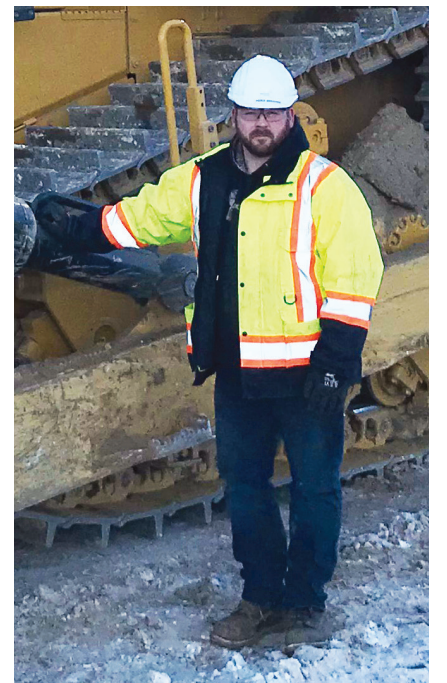
"In my role, I ensure that all of our equipment at the Eagle Gold Mine is properly maintained and our team members have the tools and materials they need to perform their jobs efficiently and safely," says Hissink.

Eagle Gold Mine is Mike's fourth start-up operation. He is a Journeyman Millwright with over two decades of experience in the mining industry.

"I love problem solving and being part of successful solutions," continues Hissink. "I really enjoy when everything you planned and organized starts to come to fruition. As proof of Eagle Gold Mine's successful start-up, I most look forward to holding that first bar of gold later this year."

From site, Mike returns home to his eight children, two dogs, one cat and wife Terry and loves spending time with the family camping and hiking.

"I first visited the Yukon seven years ago and have now relocated my family to Dawson City," says Hissink. "The Yukon is one of the friendliest and most accepting places I have ever been and I believe in supporting the communities that support our mine."



Victoria Gold Senior Maintenance Planner Mike Hissink at site.

VICTORIA GOLD IS PROUD TO HAVE YUKONERS AT WORK

IF YOU ARE A YUKONER WITH MINING EXPERIENCE, WE ENCOURAGE YOU TO CONNECT WITH US.

Victoria is currently hiring tradespeople, equipment operators, process/crusher operators and other positions to work at the Eagle Gold Mine. Visit the "Work For Us" page on our website at vitgoldcorp.com/contact/work-for-us/ and send your resume to greatpeoplework@vitgoldcorp.com.

ABOUT VICTORIA GOLD & THE EAGLE GOLD MINE

The Eagle Gold Mine, currently under construction, is part of Victoria's 100-per-cent owned Dublin Gulch gold property located approximately 375 kilometres north of Whitehorse and 85 kilometres north, northeast of the Village of Mayo within the traditional territory of the First Nation of Na-Cho Nyak Dun. The property is accessible by road year-round and is within Yukon Energy's electrical grid.

The Eagle Gold Mine has received all major permits for construction and operations, completed the Yukon Environmental and Socio-economic Assessment Board (YESAB) process and mutually created and

implements the *Comprehensive Cooperation and Benefits Agreement* with the First Nation of Na-Cho Nyak Dun.

