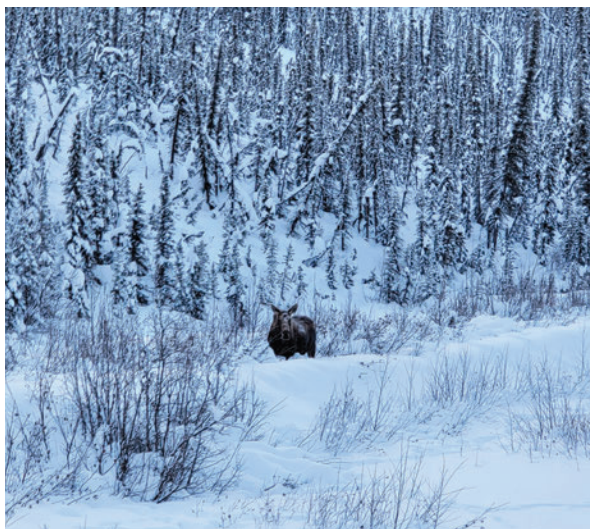


## MINE UPDATE

VGCX.COM

### WILDLIFE PROTECTION AT THE EAGLE GOLD MINE



Wildlife observations from the Eagle Gold Mine site.

At Victoria Gold's Eagle Gold Mine, wildlife protection is an important element of the Company's corporate culture and the entire team's commitment to environmental responsibility.

"Victoria Gold is committed to the success of the Eagle Gold Mine and to ensuring that its operation and closure have positive effects in the Yukon as we work to minimize our environmental impact," says Victoria Gold President & CEO John McConnell.

Personnel at site are educated about the area's wildlife monitoring and mitigation measures and how to adhere to them through initiatives including mandatory site orientations, traffic control policies and the implementation of management plans such as bear

awareness and a **wildlife observation reporting program**.

The site's wildlife observation reporting program entails personnel recording wildlife sightings and encounters on **wildlife observation cards**; which is a tool used to track and evaluate the frequency of animal encounters. These observation recordings help to monitor species at risk and notify site personnel of potentially dangerous animals around work areas.

Wildlife observations are compiled on a quarterly basis and submitted to Yukon Energy, Mines and Resources in accordance with the mine's permitting requirements. Routine observations include an assortment of large and small animal species including moose, bears, lynx, marten, porcupine and a variety of birds.

The Eagle Gold Mine's Environmental Department provides ongoing wildlife and reporting education for site personnel through site-wide bulletins, collaboration with mine department leads and presentations in meetings. In addition, the department coordinates and participates in a number of wildlife surveys including late winter moose surveys.

"Our intent is to act responsibly by demonstrating environmental stewardship," adds McConnell. "The Victoria Gold team believes that environmental stewardship is not just a matter of doing the right thing - rather there is a business case for doing so which is creating value for Yukoners today and for future generations."

## VICTORIA GOLD IS PROUD TO HAVE YUKONERS AT WORK

IF YOU ARE A YUKONER WITH MINING EXPERIENCE, WE ENCOURAGE YOU TO CONNECT WITH US.

Victoria is currently hiring tradespeople, equipment operators, process/crusher operators and other positions to work at the Eagle Gold Mine. Visit the "Work For Us" page on our website at [vgcx.com/contact/work-for-us/](http://vgcx.com/contact/work-for-us/) and send your resume to [greatpeoplework@vgcx.com](mailto:greatpeoplework@vgcx.com).

### ABOUT VICTORIA GOLD & THE EAGLE GOLD MINE

The Eagle Gold Mine is situated within Victoria Gold's 100 per cent-owned Dublin Gulch Property located approximately 375 kilometres north of Whitehorse and 85 kilometres north, northeast of the Village of Mayo within the traditional territory of the First Nation of Na-Cho Nyak Dun. The property is accessible by road year-round and is connected to Yukon Energy Corp's electrical grid. The mine is a significant contributor to the Yukon economy employing 350-400 people.

