



TEAMWORK

YUKONERS AT WORK AND EQUITY, DIVERSITY AND INCLUSION (EDI)

At the end of 2023, Victoria Gold employed 605 people of which 471 were direct hires; making the Company a significant socio-economic contributor to the Yukon. Of Victoria Gold's 471 employees, 181 are under the age of 35 and Yukon (local) hires average 32 per cent positioning it as the largest private sector employer in the territory.

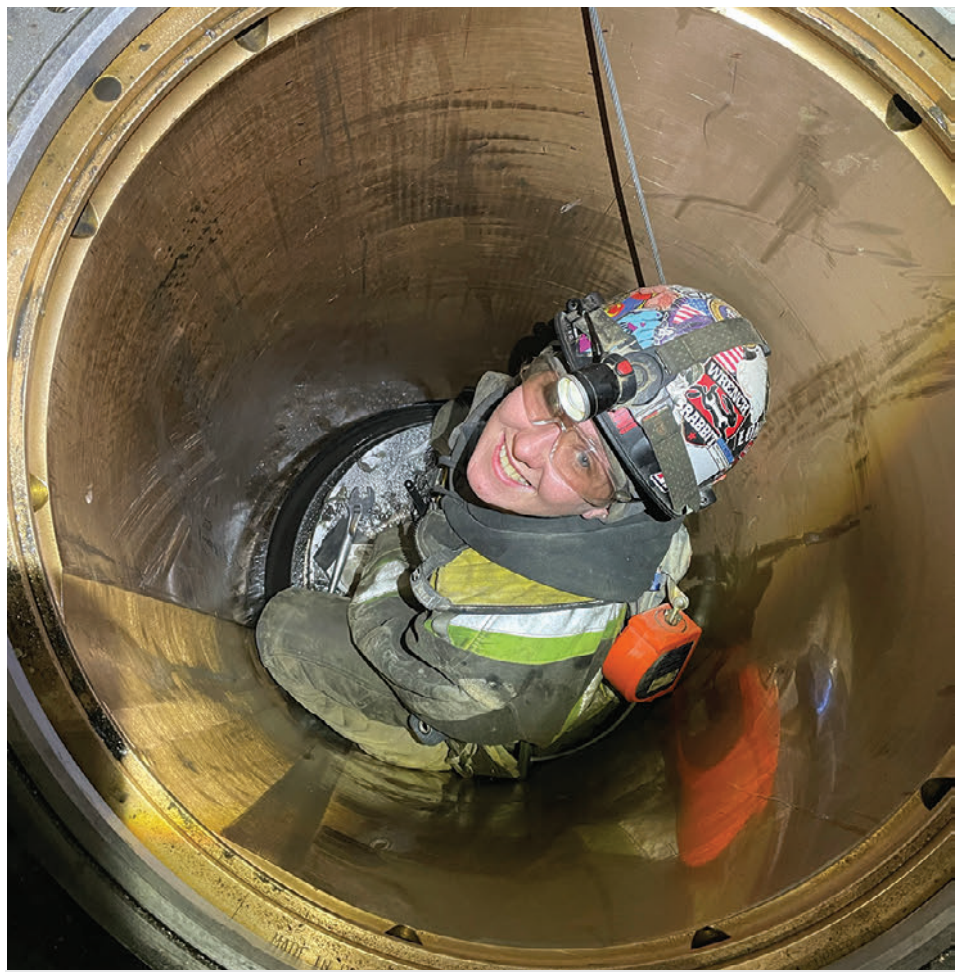
Considering the Yukon's population is less than 44,000, Victoria Gold's percentage of Yukoners At Work is substantial.

Victoria Gold directly promotes inclusion and diversity and preferentially considers and hires First Nation of Na-Cho Nyak Dun (FNNND) citizens, within whose traditional territory the Eagle Gold Mine is located, Yukon First Nation citizens, Village of Mayo residents and Yukoners whose qualifications, skills and experiences are applicable. The Company is also represented on the Yukon Women in Mining Board of Directors and its Equity, Diversity and Inclusion (EDI) Committee.

Victoria Gold employs many women in non-traditional roles at the mine with 22 operating haul trucks, heavy equipment, loaders or shovels including **Christina McIntyre, a Yukoner At Work**, who has been with the Company at the Eagle Gold Mine since September 2021 working as a Fuel and Lube Technician.

She is now a Millwright apprentice and is well involved in the site equipment's day-to-day maintenance.

"Being a Millwright apprentice at the Eagle Gold Mine means taking the first steps in history as the first woman from my home territory of the Yukon to be a Millwright," says Christina. "To pave the way for other women and girls to dream big! This opportunity gives me a chance to gain knowledge and prove that women can find challenging, yet satisfying, work in the Trades."



Victoria Gold's Christina McIntyre, a Yukoner At Work, completing the installation of retaining clips in the Eagle Gold Mine's Primary Crusher.

VICTORIA GOLD IS PROUD TO HAVE YUKONERS AT WORK

IF YOU ARE A YUKONER WITH MINING EXPERIENCE, WE ENCOURAGE YOU TO CONNECT WITH US.

Victoria is currently hiring tradespeople, equipment operators, process/crusher operators and other positions to work at the Eagle Gold Mine. Visit the "Work For Us" page on our website at vgcx.com/contact/work-for-us/ and send your resume to greatpeoplework@vgcx.com.

ABOUT VICTORIA GOLD & THE EAGLE GOLD MINE

The Eagle Gold Mine is situated within Victoria Gold's Property, located approximately 375 kilometres north of Whitehorse and 85 kilometres north, northeast of the Village of Mayo within the traditional territory of the First Nation of Na-Cho Nyak Dun. The property is accessible by road year-round and is connected to Yukon Energy Corp's electrical grid. The mine is a significant contributor to the Yukon economy employing 350-400 people.

